

Wood County Solar Project

August 2019

Drew Gibbons
Savion
Development Director



Savion Introduction

Company Info

- Headquartered in Lenexa, KS
- 63 Full-Time Employees
- Previously a part of Tradewind Energy
- Recently acquired by Macquarie's Green Investment Group

Current Development Portfolio

- Savion is present in 23 states
- 8,200 MW (96 Projects)

Track Record of Success

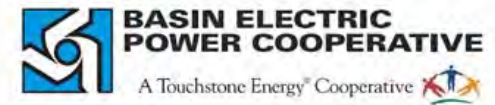
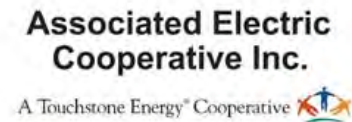
- More than 950 MW of contracted & operating projects (16 projects)

TEAM'S DEVELOPMENT SUCCESS LIST – 973 MW

Project	State	Size MW	Year Online/Scheduled*
Sunflower County	MS	100.0 MW	2022
Rayos Del Sol*	TX	150.0 MW	2020
Muskegon County	MI	125.0 MW	2020 to 2021
Greensville County	VA	80.0 MW	2020
TWE Myrtle	VA	15.0 MW	2019
TWE Bowman	SC	75.0 MW	2019
Hamilton County	FL	75.0 MW	1 st phase 75 MW 2019
Palmetto Plains	SC	225.0 MW	2019
Ahoskie	NC	5.0 MW	2016
Decatur Parkway	GA	80.0 MW	2015
Decatur County	GA	20.0 MW	2015
Kelford	NC	5.0 MW	2015
Kinston	NC	5.0 MW	2015
Laurinburg	NC	5.0 MW	2015
Chocowinity	NC	4.0 MW	2015
New Bern	NC	4.0 MW	2015

*For 2019 and forward Year Online/Scheduled are contingent upon project owner. Could have multiple phases with different Commercial Operation Date.

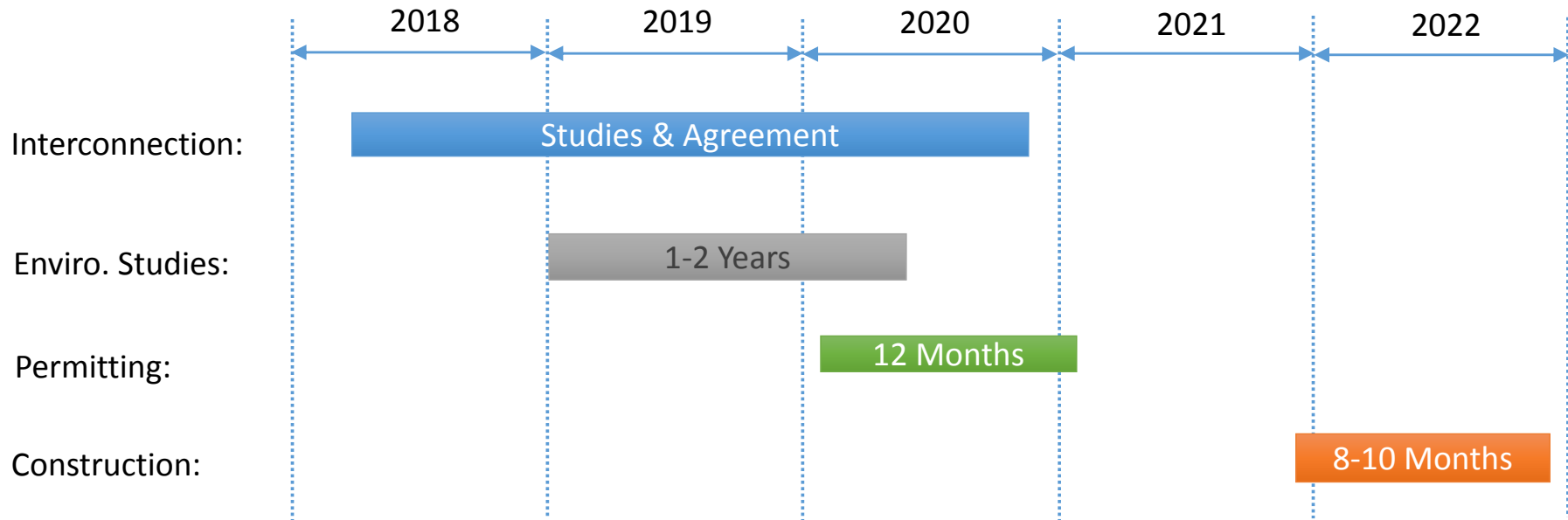
Savion Customers



Typical Development Process

- Projects take from 3-5 years from inception to construction
- Early Stage
 - Sign agreements with landowners – 50-75% of needed land
 - File interconnection application
 - Environmental Fatal Flaw analysis
- Mid Stage
 - Finalize site control
 - Field Environmental Studies – Phase I ESA, Threatened & Endangered Species, Wetlands
 - Community Outreach
 - Permitting – WI State CPCN
 - Transmission System Impact Study
 - Power Sales
- Late Stage
 - Signed Utility Sale Agreement (PPA or purchase)
 - Field Cultural Studies
 - Design and Engineering
 - Procurement
 - Transmission Facility Study and Interconnection Agreement
 - Construction & Commissioning

Expected Project Timeline



HOW SOLAR ENERGY WORKS

Photovoltaic Panels convert sunlight into electricity



The inverter converts the DC electricity to the AC



Electricity is distributed on the electrical grid



The grid provides clean energy to our homes and businesses



MARKET DRIVERS

Fossil Fuels

Price uncertainty, volatile pricing, retirement of coal facilities, cleaner emission standards, carbon tax

Declining Solar Costs

Quickly declining solar costs due to manufacturing efficiencies, increases in solar panel efficiencies, more experienced workforce

Demand From Utility

Large commitment from utility for solar energy

Consumer Demand

Local economic development, price certainty (30 years), lower emissions, clean energy, innovative technologies, renewable

Construction (1 of 2)



Construction (2 of 2)

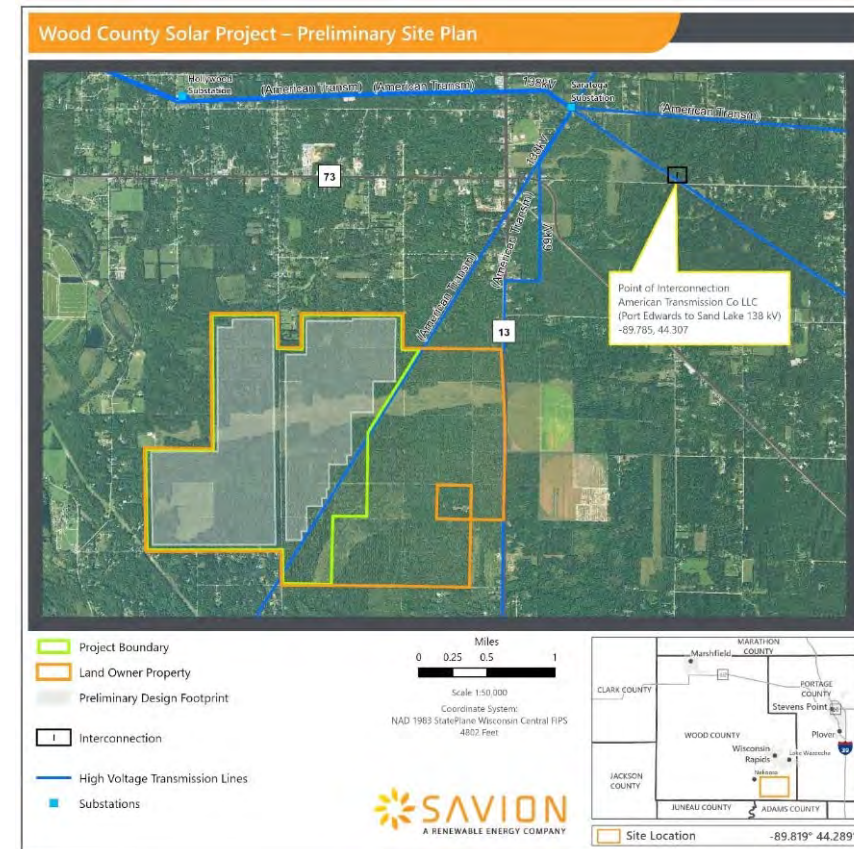


Operations



Wood County Solar Project

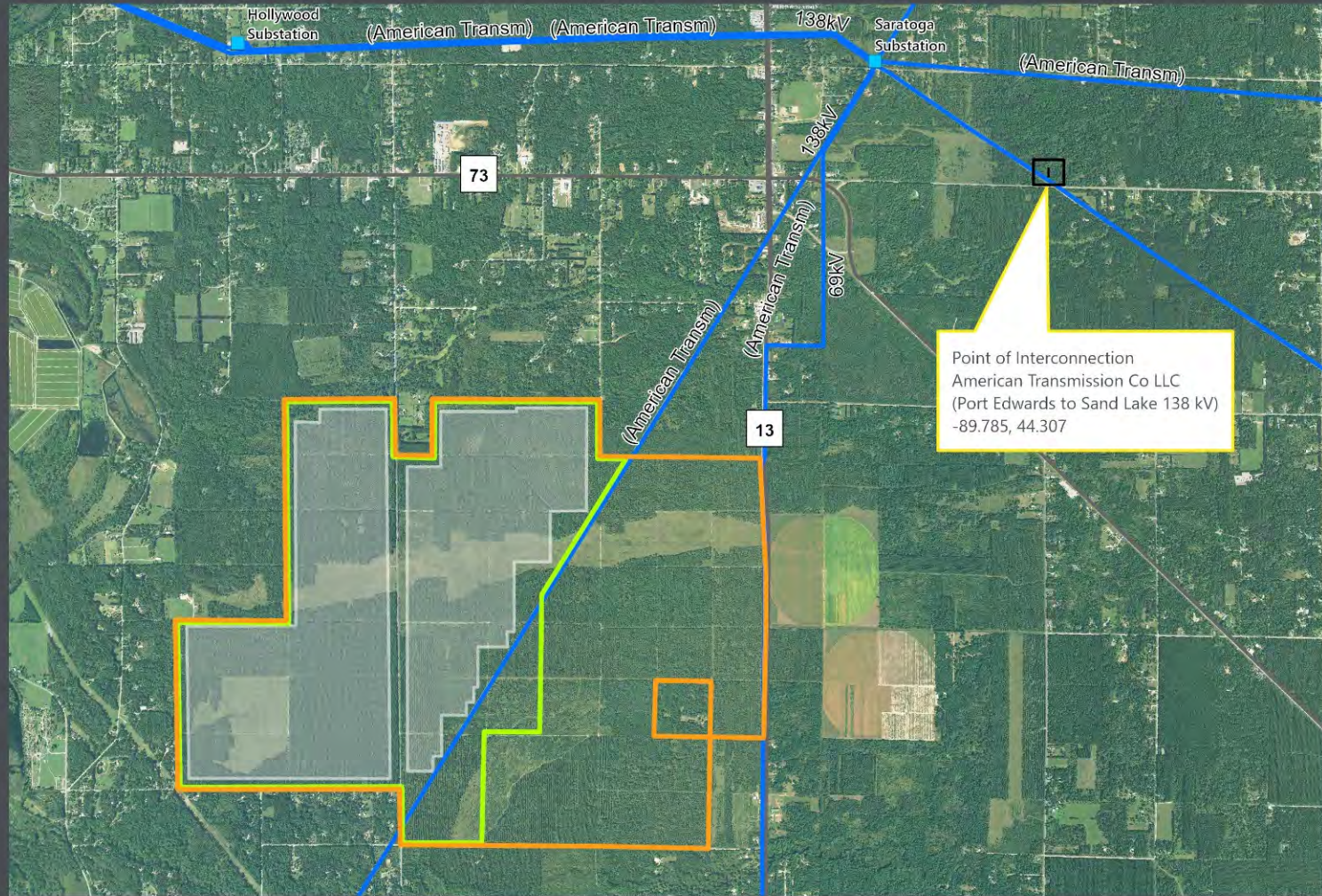
- Overview
 - Began Development in 2018
 - 150 MW Solar Project
 - Equivalent to power ~40,000 homes
 - Commercial operations as early as 2022
 - 1,650 acres in the Town of Saratoga
 - ~1,200 acre project footprint
- Why this site?
 - No significant environmental issues
 - Proximity to 138 kV transmission line
 - Significant existing vegetative visual screening
- Development Status
 - Interconnection
 - March 2018: Midcontinent Independent System Operator (MISO) interconnection submitted
 - November 2020: Interconnection Agreement Execution (expected)
 - Community Outreach
 - Community meetings and stakeholder engagement in progress
 - Environmental Studies
 - Critical Issues Analysis – Complete
 - Wetlands survey – In Progress
 - Threatened and Endangered Species report – In Progress
 - Phase I ESA report – In Progress
 - State Certificate of Public Necessity and Convenience (CPCN)
 - Application preparation in progress with an early 2020 submittal goal



Appendix



Wood County Solar Project – Preliminary Site Plan



- Project Boundary
- Land Owner Property
- Preliminary Design Footprint
- I Interconnection
- High Voltage Transmission Lines
- Substations

Miles
0 0.25 0.5 1

Scale 1:50,000
Coordinate System:
NAD 1983 StatePlane Wisconsin Central FIPS
4802 Feet

